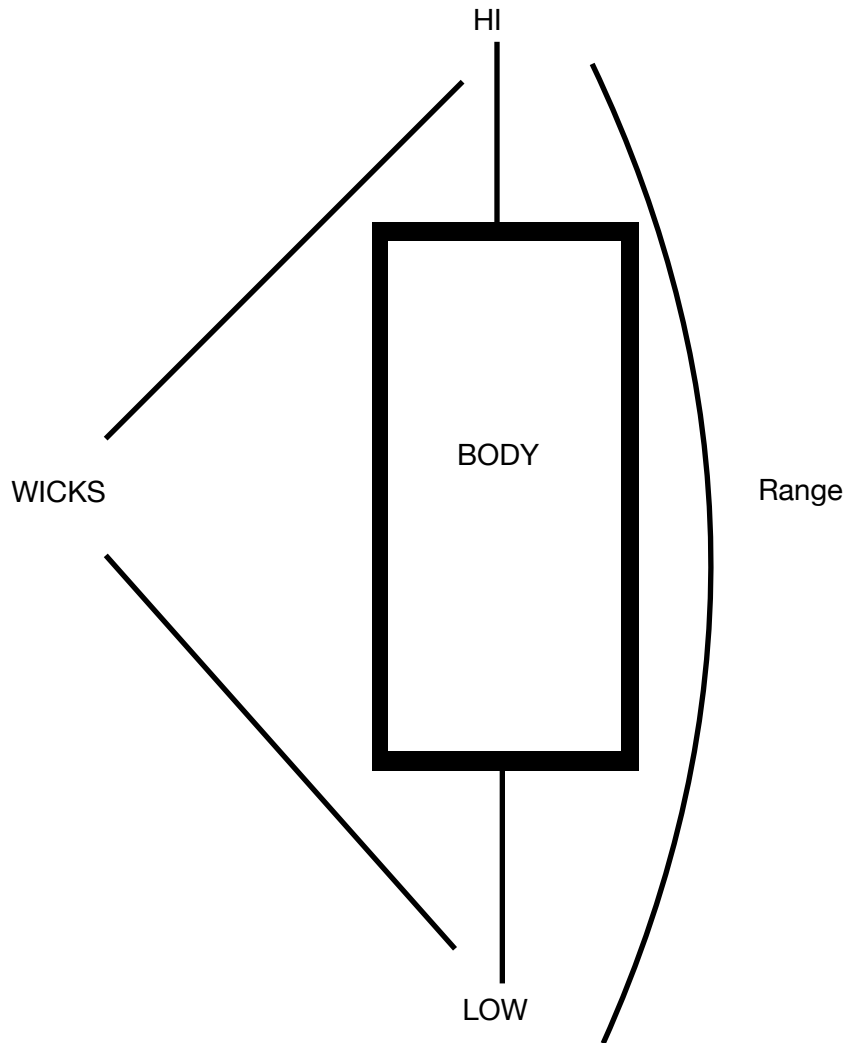


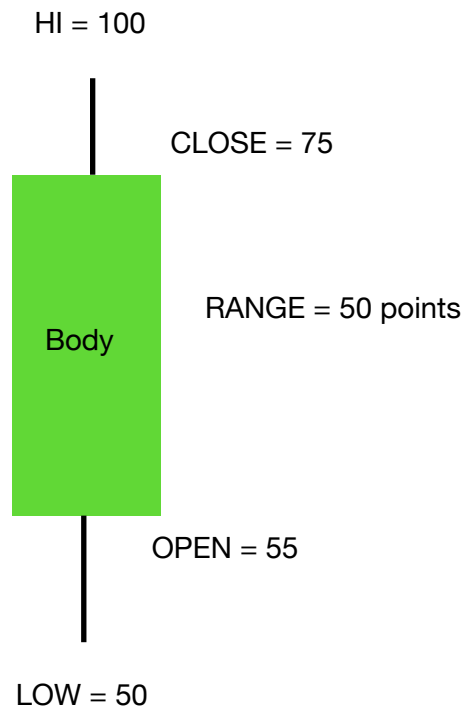
Japanese Candle Stick Anatomy



Candle Stick

- Defines price movement over x time frame (minute - days)
- Wicks where price moved over the course of the time frame
- Body defines where price opened / closed during the time frame.

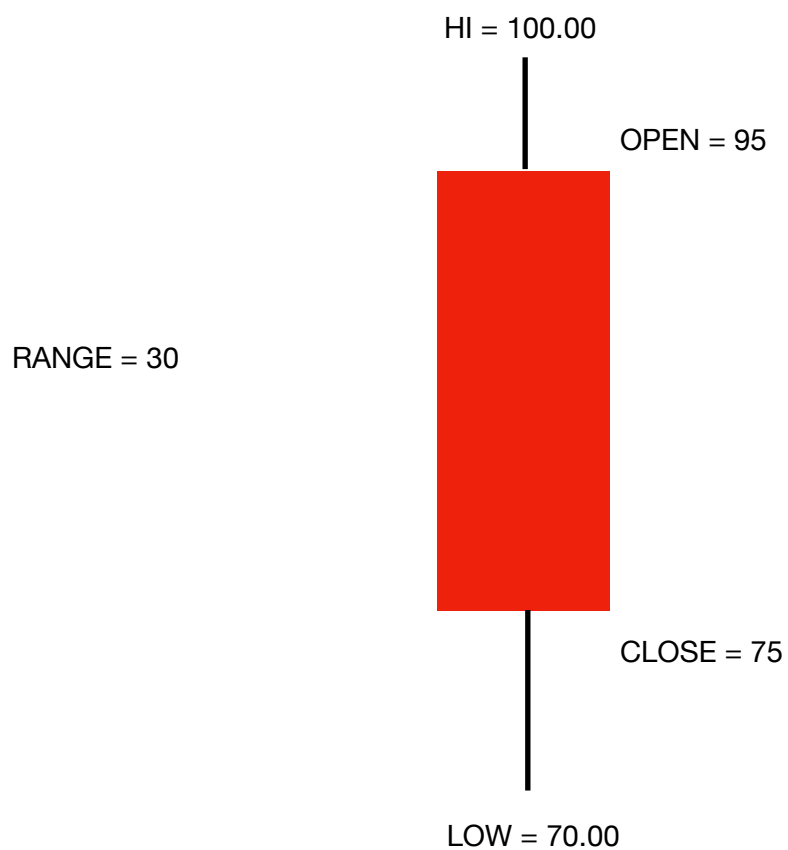
BULL CANDLE



Bull Candle

- Closes higher than the open
- Body is green

Bear Candle



Bear Candle

- Closes lower than open
- Red Body